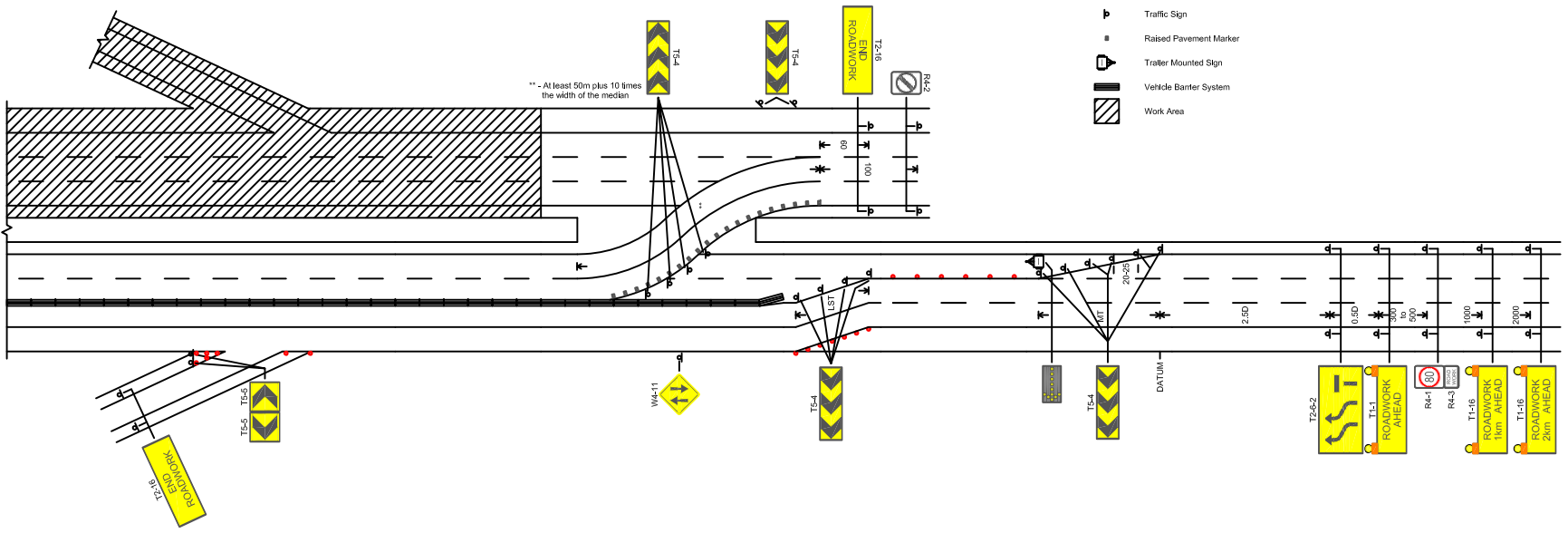
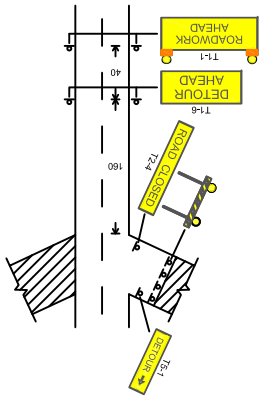


RECOMMENDED TAPER LENGTH (per lane)

Approximate approach speed km/h	Recommended taper length, m		
	Traffic control at beginning of taper	Lateral shift taper (LST)	Merge taper (MT)
Less than 45	30	30	65
45-54	30	30	80
55-64	30	60	95
65-74	N/A	70	115
75-84	N/A	80	130
85-94	N/A	90	145
95-105	N/A	100	160
Greater than 105	N/A	110	180

The closure of more than one lane on multilane roadways should be effected either as one long taper or one lane at a time, with the distance between tapers at least twice the distance given in the Lateral shift taper column above.



- KEY**
- Delineation Device
 - ▴ Traffic Sign
 - ▣ Raised Pavement Marker
 - ◡ Trailer Mounted Sign
 - ▤ Vehicle Barrier System
 - ▨ Work Area



EXAMPLES

Issue	Amendment	Date

Example Contraflow Layout
Six Lane Freeway
Long Term Works

DRG No	CONEAU/DEMO/01
SCALE	Not to scale
DIMENSIONS	Metres